

*Gazetteers – reaping the benefits of  
data management in service delivery in  
the East Riding of Yorkshire Council*

*David Richards  
Technical Services Development Team  
Streetscene Services*



# Where Are We?



# East Riding of Yorkshire Council



EAST RIDING  
OF YORKSHIRE COUNCIL

East Riding of Yorkshire Council  
County Hall Beverley  
East Riding of Yorkshire HU17 9BA  
Telephone 01482 887700 •  
[www.eastriding.gov.uk](http://www.eastriding.gov.uk)

# Demographics

- Unitary Authority
- Area: 1,000 sq. miles
- Population: c.330,000
- 176 parishes
- 50% live in 11 parishes



# Gazetteers

- A "gazetteer" is a "geographical index or dictionary'
- Important reference for information – places and names
- Early gazetteers?
  - Ancient Egypt – 1100BC
  - Ancient Greece – 323BC
  - Domesday Book – 1086 AD
  - Nomina Villarum – 1316 AD



# Gazetteers

- Modern gazetteers?
  - Computer based GIS systems
  - Spatially referenced – usually OS National Grid
  - Endless list
    - Statistics – accidents, census, crime
    - Places of interest
    - Historical information – buildings, maps, photographs
    - Addresses – NAG / National Land and Property Gazetteer
- National Street Gazetteer



# National Street Gazetteer - NSG

- GeoPlace is a public sector limited liability partnership between the Local Government Association and Ordnance Survey.
- Their role is to maintain the National Address Gazetteer Database and the National Street Gazetteer Database for England and Wales, providing definitive sources of publicly-owned spatial address and street data.
- All highway authorities in England and Wales contribute street data from their Local Street Gazetteer (LSG) to the NSG.
- Statutory requirement for NRSWA – quarterly submissions.
- Contractual obligation as part of the PSMA – monthly submissions.
- Part of the largest shared service across local government providing essential information to utility companies and emergency services.
- Benefit?





# Local Street Gazetteer (LSG)

- The Local Street Gazetteer provides the street identifiers and spatial information essential to the recording and use of street data in accordance with BS 7666-1:2006.
- The maintenance of a Local Street Gazetteer is a statutory requirement of:-
  - New Roads & Street Works Act 1991
  - Traffic Management Act 2004



# Local Street Gazetteer (LSG)

•BS 7666-1:2006 defines a street as “a way or thoroughfare providing a right of passage on foot, by cycle or by motor vehicle, or access to more than one property.”

This includes:

Roads

Public Rights of Way

Footpaths      Bridleways

Cycle ways      Cycle Tracks

Motorways      Service Roads

Cycle Tracks      Access Roads

But Excludes:

Rivers

Waterways

Railways

Access to single properties





# Local Street Gazetteer (LSG)

Each street has the following geographic information recorded:

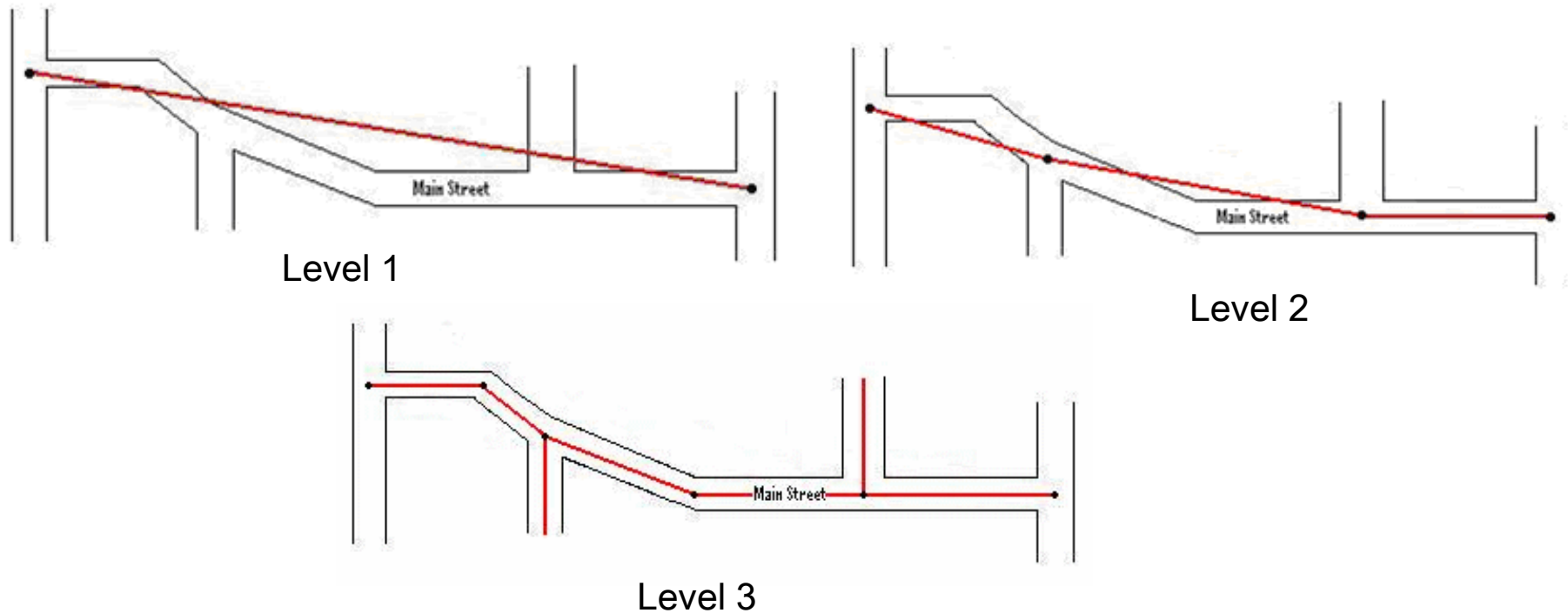
Street Authority  
Unique Street Reference  
Number (USRN)  
Street Name or Description  
Street Type

Geographic Extents  
Cross References  
Record Review Dates  
Record version



# Local Street Gazetteer (LSG)

What does it look like?



**EAST RIDING**  
OF YORKSHIRE COUNCIL

East Riding of Yorkshire Council  
County Hall Beverley  
East Riding of Yorkshire HU17 9BA  
Telephone 01482 887700 •  
[www.eastriding.gov.uk](http://www.eastriding.gov.uk)

# Local Street Gazetteer (LSG)

Additional information is also recorded to support the NRSWA function :

Street Interests

Reinstatement Designation

Special Designations

Special Designations

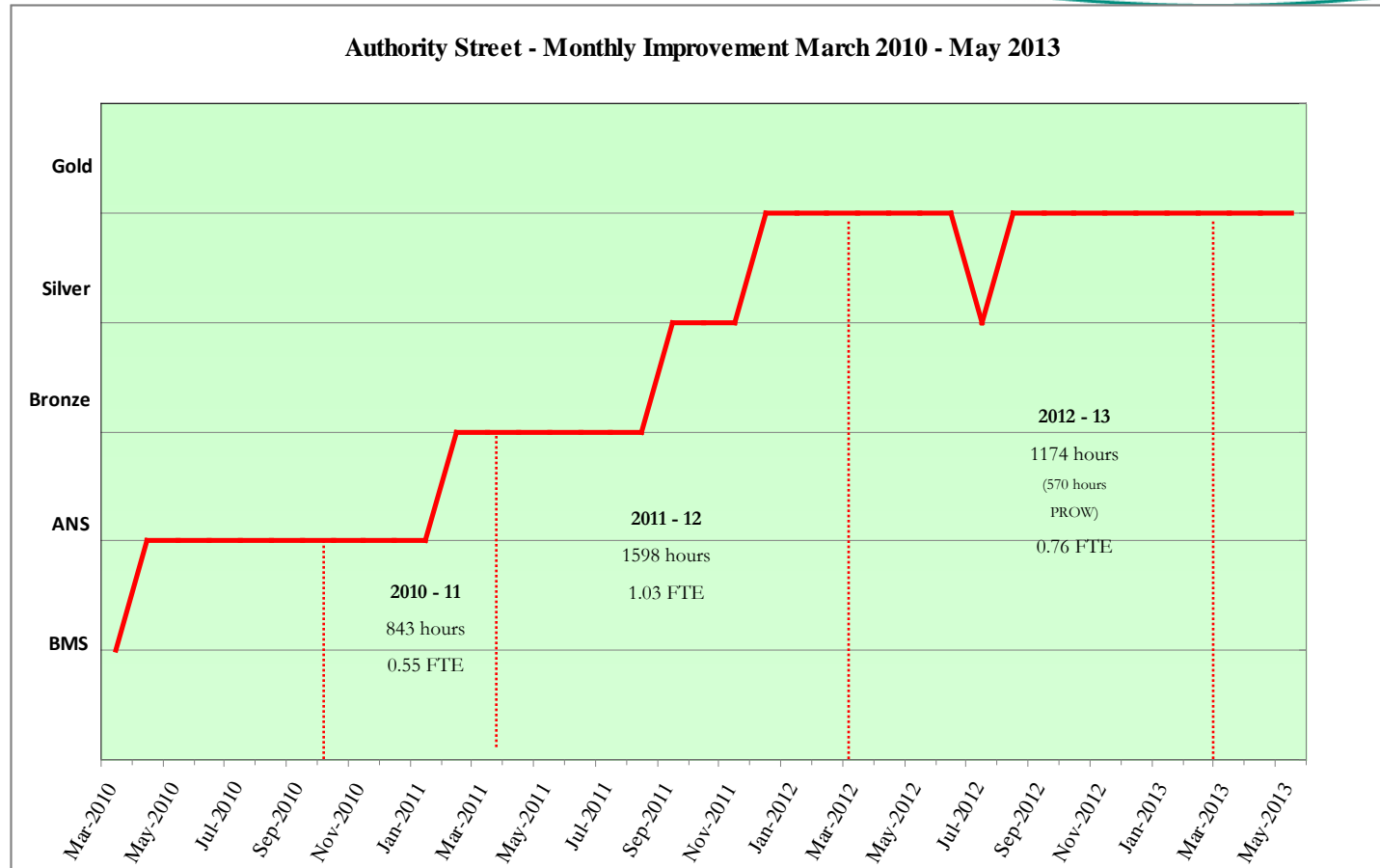
- Bridges
- Culverts
- SSSI/VNR/Conservation Area
- Traffic Sensitivity
- Level Crossing Safety Zones
- Pipelines
- Special Surfaces
- Special Events



**EAST RIDING**  
OF YORKSHIRE COUNCIL

East Riding of Yorkshire Council  
County Hall Beverley  
East Riding of Yorkshire HU17 9BA  
Telephone 01482 887700 •  
[www.eastriding.gov.uk](http://www.eastriding.gov.uk)

# Local Street Gazetteer (LSG)



# Local Street Gazetteer (LSG)

Ongoing  
issues!



**EAST RIDING**  
OF YORKSHIRE COUNCIL

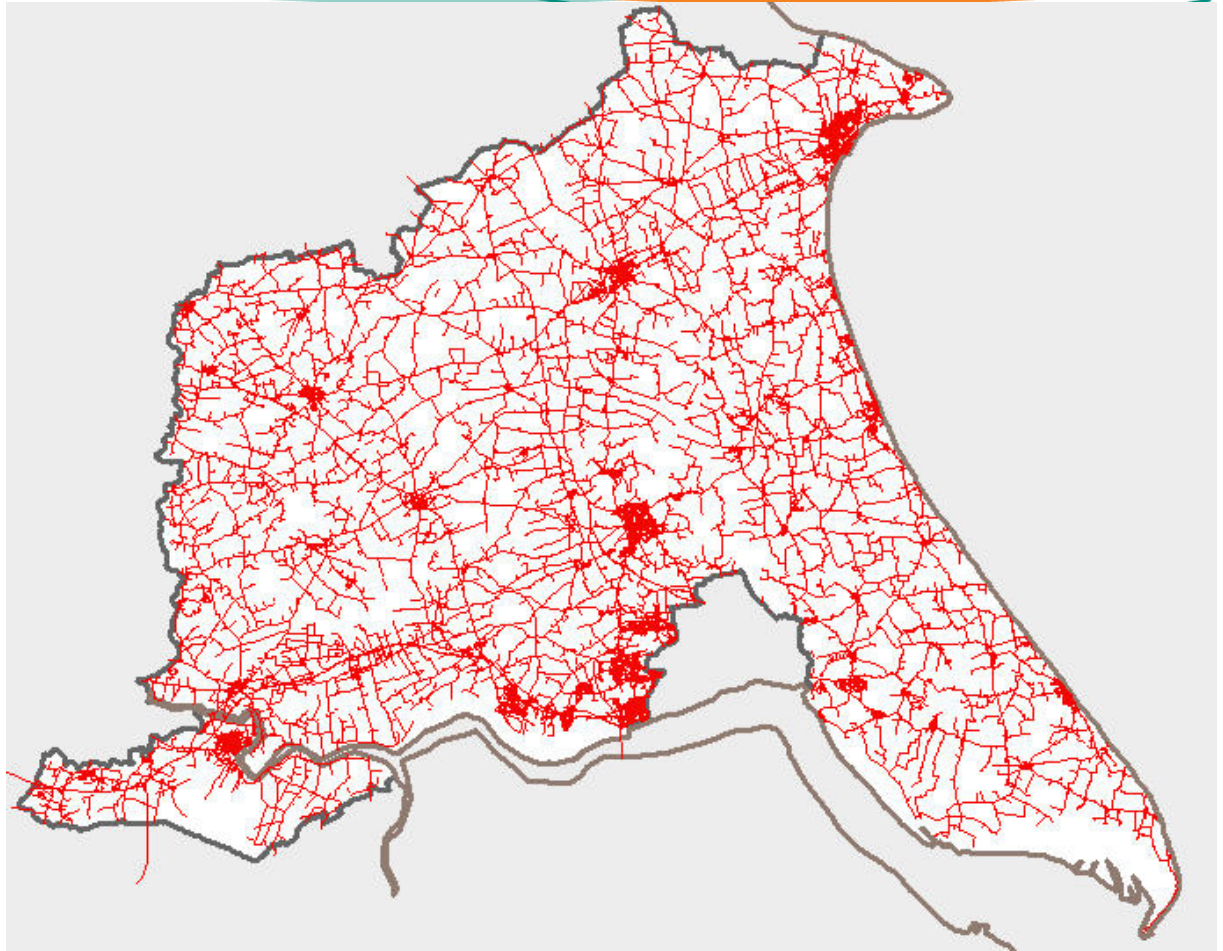
East Riding of Yorkshire Council  
County Hall Beverley  
East Riding of Yorkshire HU17 9BA  
Telephone 01482 887700 •  
[www.eastriding.gov.uk](http://www.eastriding.gov.uk)



# Local Street Gazetteer (LSG)

What it looks  
like now

Underpinning  
business  
processes



**EAST RIDING**  
OF YORKSHIRE COUNCIL

East Riding of Yorkshire Council  
County Hall Beverley  
East Riding of Yorkshire HU17 9BA  
Telephone 01482 887700 •  
[www.eastriding.gov.uk](http://www.eastriding.gov.uk)

# LSG – Street Works

- LSG – fundamental reference for EToN
  - Mobile working since 2004 – task list only
  - Coordinates optional - little or no spatial data
  - Published on council website from 2006  
<http://mergis.eastriding.gov.uk/Map.aspx?Map=StreetWorks,503458,%20439474>
  - Coordinates became mandatory on notices 2008
  - Spatial representation improved
  - 2<sup>nd</sup> generation devices with background mapping
  - Published on ELGIN website 2012  
<http://roadworks.org/> or <http://www.elgin.org.uk>





# LSG – Street Works on the web

The screenshot displays the East Riding of Yorkshire Council's Street Works web application. The main map shows the region of East Yorkshire, with a detailed inset map on the left showing a specific location near Stamford. A pop-up window for this location provides the following information:

- Goodman East Riding**
- Works Start: 26 J
- End: 26 J
- Low impact, del**
- Location : 0 GOC
- Description : Rer
- Current status: A
- Traffic lights, etc:
- Queries should b
- Water quoting re

The sidebar on the right contains the following sections:

- Map layers**
  - Traffic incidents and roadworks**
    - ☐ Live incidents
    - ☐ Live traffic congestion
    - ☒ Current roadworks
      - ☒ Delays likely
      - ☒ Delays possible
      - ☒ Delays unlikely
      - ☒ No information available
    - Roadworks starting or in progress today
      - ☒ Local Authority works
      - ☒ Electricity works
      - ☒ Gas works
      - ☒ Network Rail works
    - ☐ Planned roadworks
  - Public transport**
  - Base map**
  - Advanced**
- Alerts and Search**

The bottom right corner shows a map of the River Humber area with a 'Previous version' button and a 'Map data ©2013 Google' notice.

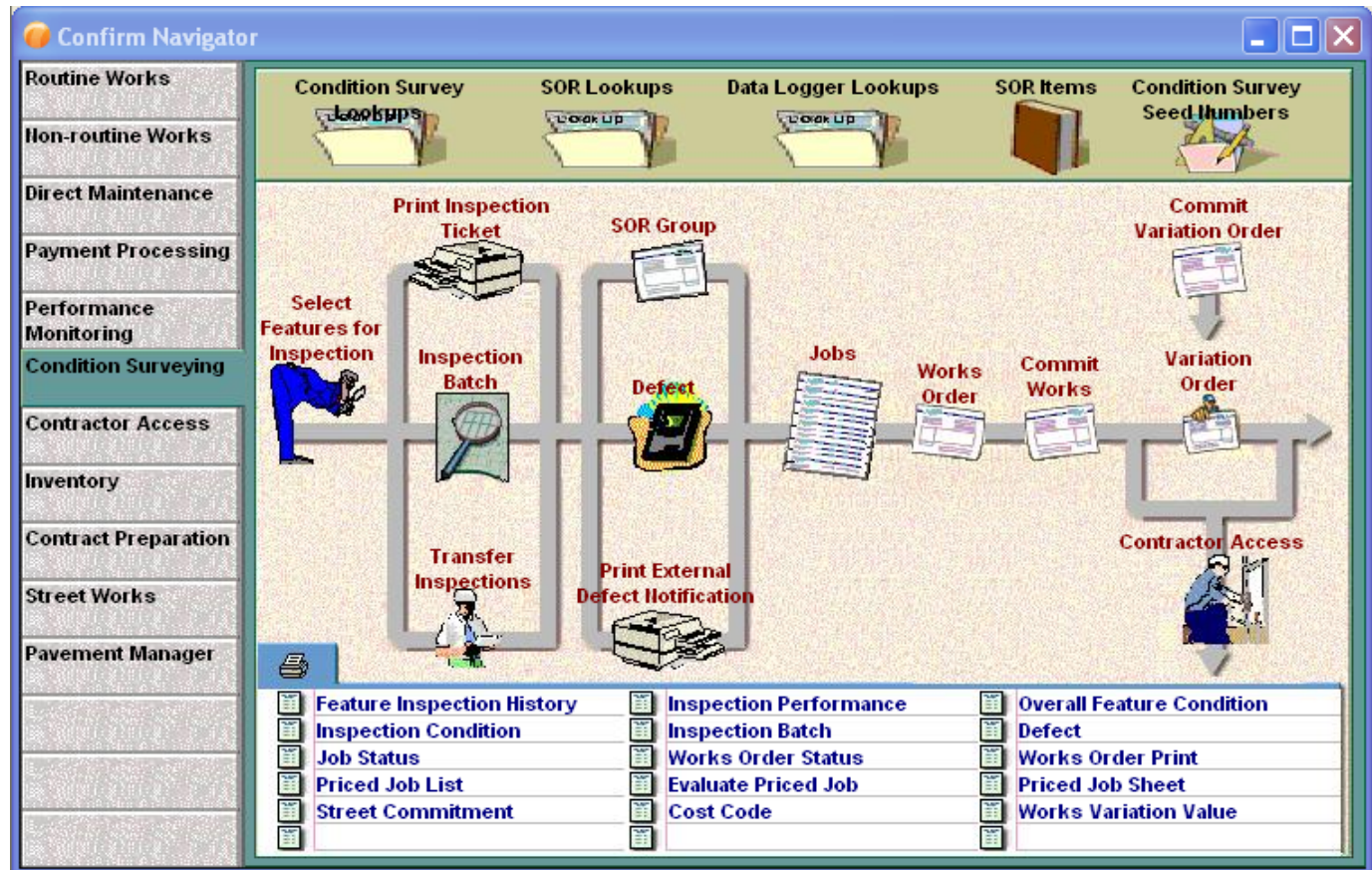


**EAST RIDING**  
OF YORKSHIRE COUNCIL

East Riding of Yorkshire Council  
County Hall Beverley  
East Riding of Yorkshire HU17 9BA  
Telephone 01482 887700 •  
[www.eastriding.gov.uk](http://www.eastriding.gov.uk)

# LSG – Supporting Service Transformation

## •Integration



# LSG – Supporting Service Transformation

- Financial challenges
- Do more for less / Invest to save
- Innovation
- National initiatives
- Reputation
- Back office integration





# LSG – Highway Asset Transformation



Principal Roads 348km

Non-Principal Roads 1250km

Unclassified Roads 1765km



**EAST RIDING**  
OF YORKSHIRE COUNCIL

East Riding of Yorkshire Council  
County Hall Beverley  
East Riding of Yorkshire HU17 9BA  
Telephone 01482 887700 •  
[www.eastriding.gov.uk](http://www.eastriding.gov.uk)

# LSG – Highway Asset Transformation

## 2010 - why change?

Lack of information

Historic cost based approach no longer sustainable for assets with long life duration like highways

Government requested a review of all transport infrastructure assets in 2008



**EAST RIDING**  
OF YORKSHIRE COUNCIL

East Riding of Yorkshire Council  
County Hall Beverley  
East Riding of Yorkshire HU17 9BA  
Telephone 01482 887700 •  
[www.eastriding.gov.uk](http://www.eastriding.gov.uk)

# LSG – Highway Asset Transformation

## 2008 CIPFA CoP

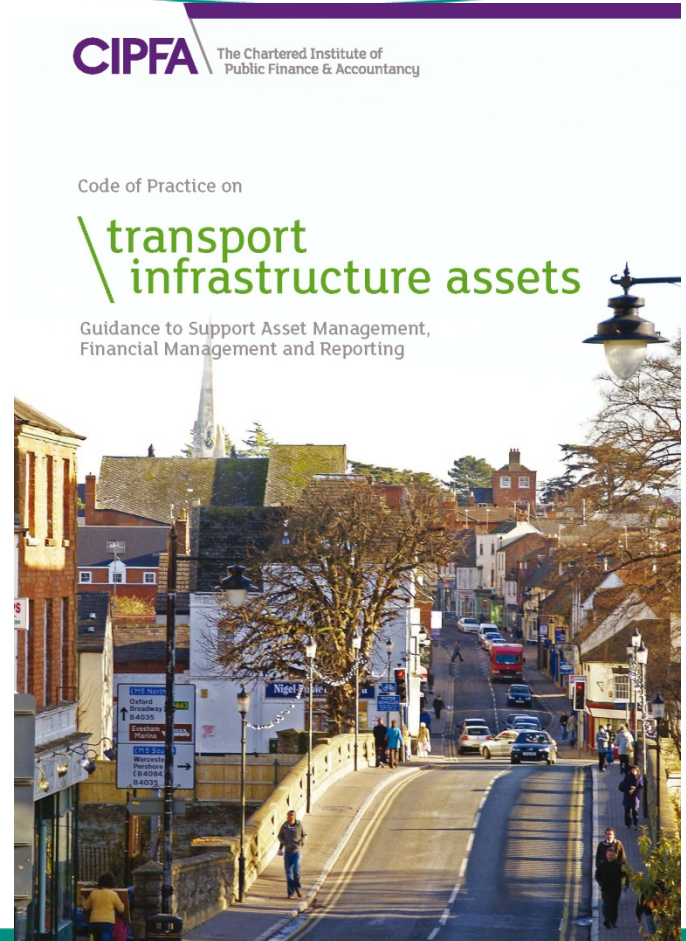
Different approach to financial information and life cycle planning.

Single set of financial management information:

- Robust
- Consistent between transport / highway authorities

Largest capital asset in public sector

East Riding Highways £3.5 bn (GRC)



**EAST RIDING**  
OF YORKSHIRE COUNCIL

East Riding of Yorkshire Council  
County Hall Beverley  
East Riding of Yorkshire HU17 9BA  
Telephone 01482 887700 •  
[www.eastriding.gov.uk](http://www.eastriding.gov.uk)

# LSG – Highway Asset Transformation

## Implementation

- Project Board appointed January 2011
- Highway Asset Strategy, CES & Streetscene, Finance, Audit, Insurance Team & Corporate ICT
- Changes to corporate ledger included in asset management system
- Works ordering and treatments recorded to street and feature level
- Major change management issues – technology shock!
- Change to highway inspection procedures





# LSG – Highway Asset Transformation

- Safety Inspections – old method
- All paper based records
- Works orders input by hand
- Record keeping and record retrieval for court = time consuming
- Inconsistencies 5 teams
- Poor records regarding repair times
- 80 – 85% coverage
- Change required



# LSG – Highway Asset Transformation

- Safety Inspections – new method
- Developed 2011 – 2012
- Fully implemented 2012 – 2013
- 350 Inspection Routes
- Average 70 Routes / month
- > 700 inspections 2012 / Feb 2013
- 96% coverage
- Fully auditable



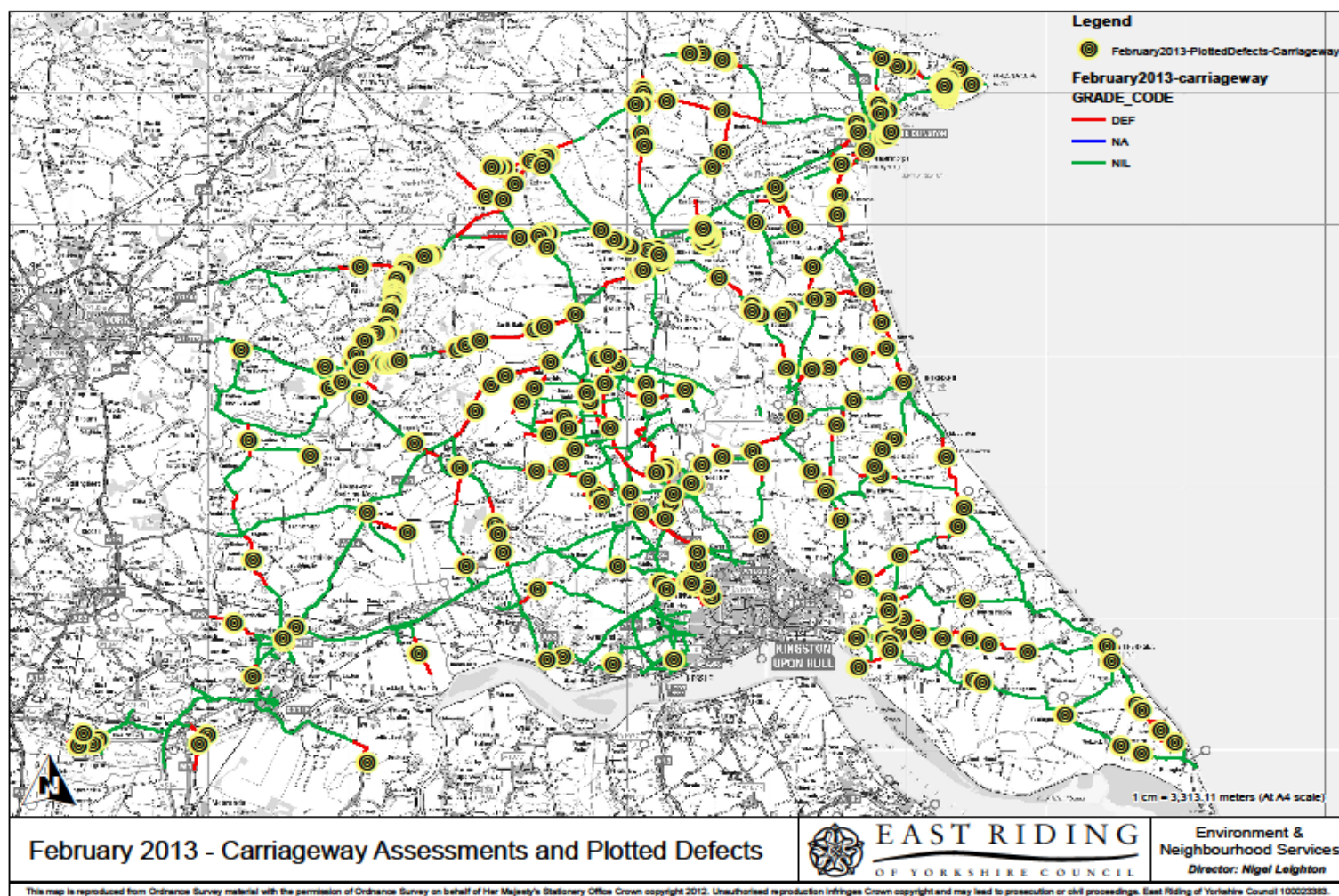
# LSG – Highway Asset Transformation

- Geo-data
- 55,000 mapped defects
- 93 % mapped by GPS
- Actions date / time stamped
- Full audit trail
- Cost known per defect
- Insurance records – identified and repaired data to exact minute
- Intelligence across the network
- Professionalism in court





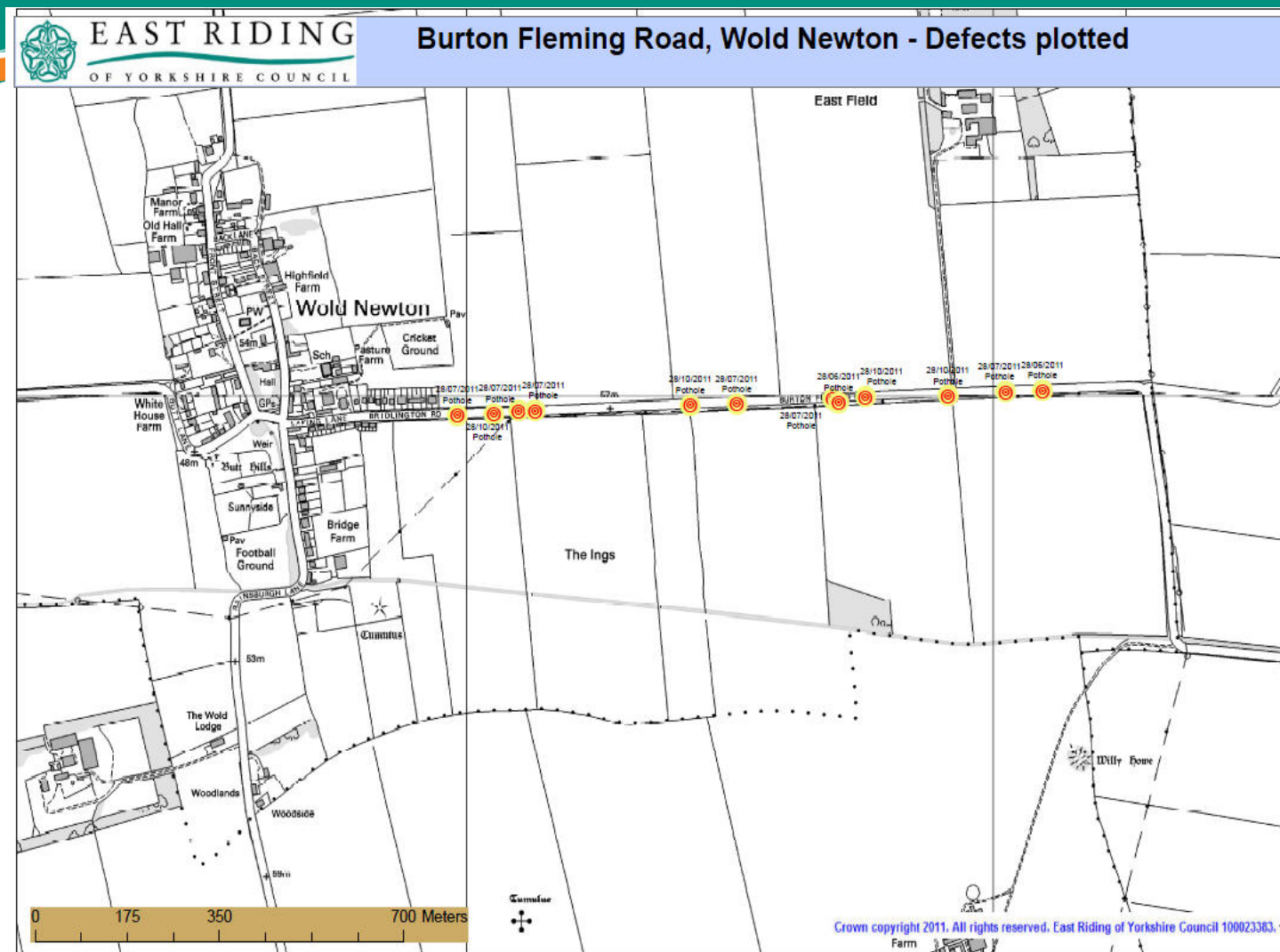
# LSG – Highway Asset Transformation



**EAST RIDING**  
OF YORKSHIRE COUNCIL

East Riding of Yorkshire Council  
County Hall Beverley  
East Riding of Yorkshire HU17 9BA  
Telephone 01482 887700 •  
[www.eastriding.gov.uk](http://www.eastriding.gov.uk)

# LSG – Highway Asset Transformation



**EAST RIDING**  
OF YORKSHIRE COUNCIL

East Riding of Yorkshire Council  
County Hall Beverley  
East Riding of Yorkshire HU17 9BA  
Telephone 01482 887700 •  
[www.eastriding.gov.uk](http://www.eastriding.gov.uk)

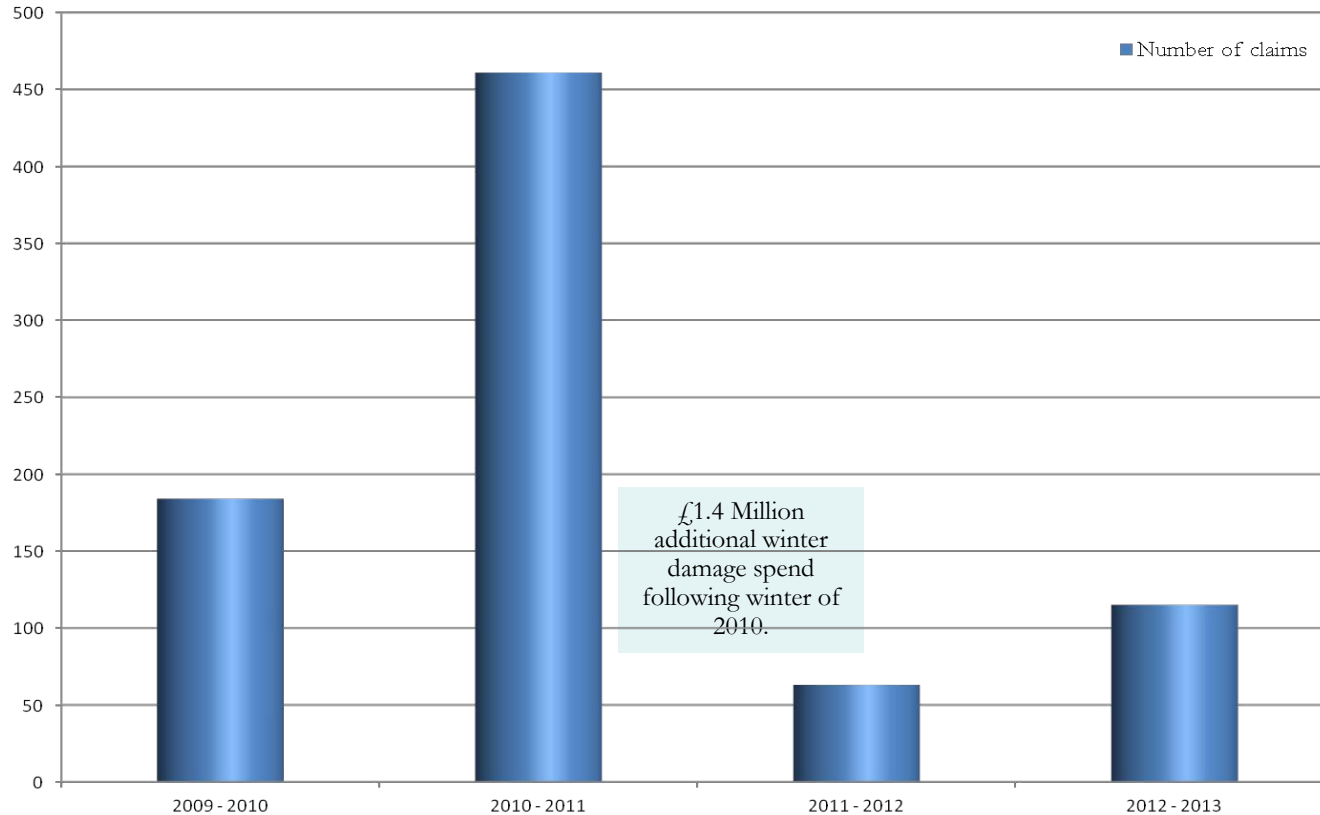
# LSG – Highway Asset Transformation

- Invest to Save
- Preventative treatment is the key
- Reduction in defects
- Reduction in claims
- Increased capacity to undertake inspections
- Prevention is better than cure
- Invest now save later



# LSG – Highway Asset Transformation

Bar chart showing the number of claims per financial year





# LSG – Street Lighting

- APSE - Best Street Lighting Performer 2007
  - > 40,000 lit assets
  - Predominantly paper based system
  - Continual improvement
  - 2008 – implemented integrated ICT solution in Confirm
    - Night time inspections record data onto mobile GPS device
    - Full record rather than by exception
    - Removed multiple data handling – data entry errors?
    - Improved work ordering
    - Jobs on mobile devices – details updated and data transferred
    - Removed multiple data handling – data entry errors?



# LSG – Forestry Asset Transformation

- Project commenced January 2012

- 28,000 trees? Unknown liability!
- Capture all highway trees / Private being a danger to the highway
- £150k investment 2012 - £50k hardware/software
- 3 months June – August 2012
- Initial routes based on LSG – adopted highway
- Completed in 9 weeks!
- Extended to off street sites – schools, parks – further gazetteer?
- >400,000 assets captured
- Approx. 9,000 'Dead' or requiring further inspection
- Still ongoing - paper system being replaced by integrated ICT solution July 2013



# LSG – Winter Services

## •Facts & Figures

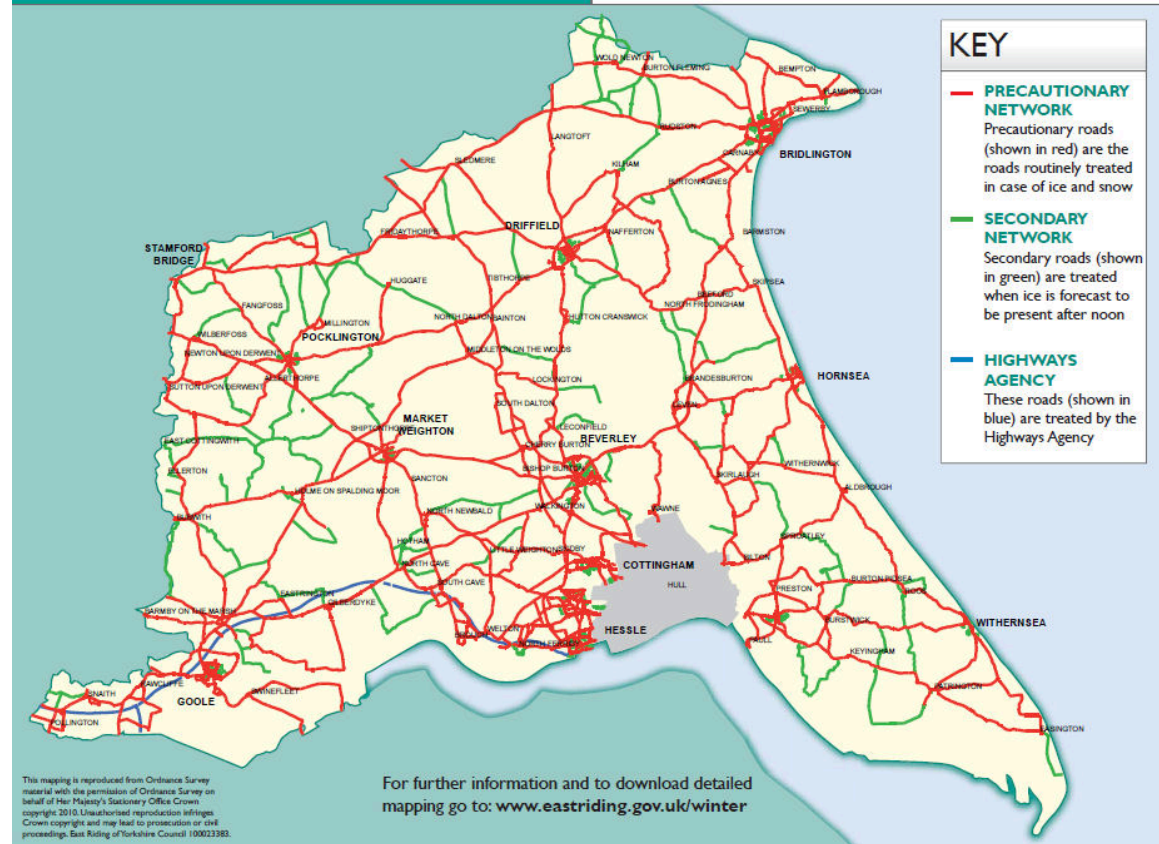
- Precautionary Routes 38%
- Reactionary Routes 12%
- Footpath network 2.56%
- Salt bins >900

## •Self-help

<http://www2.eastriding.gov.uk/winter/>

### EAST RIDING ROAD SALTING MAP

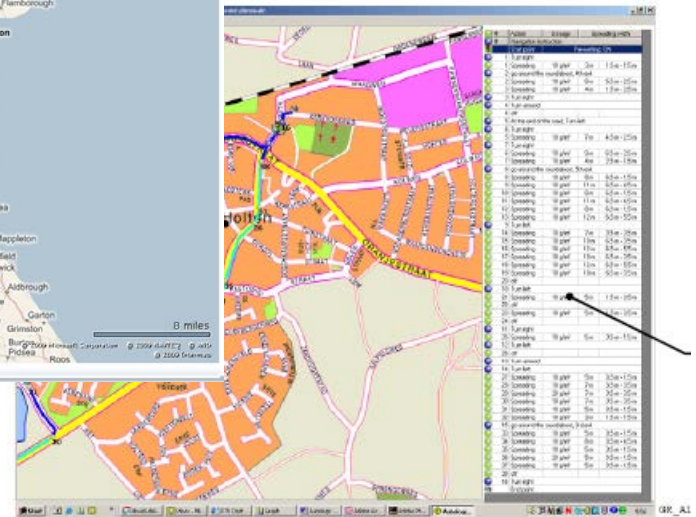
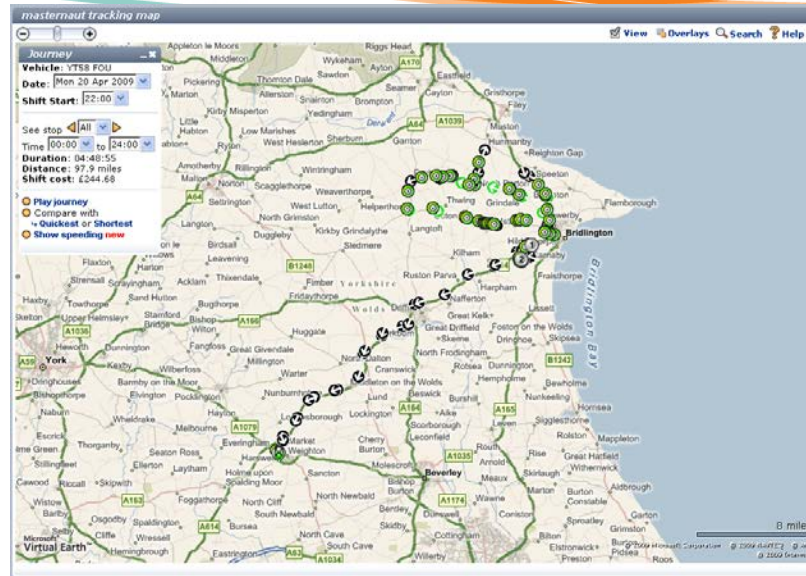
TREATED WINTER ROADS IN YOUR AREA



**EAST RIDING**  
OF YORKSHIRE COUNCIL

East Riding of Yorkshire Council  
County Hall Beverley  
East Riding of Yorkshire HU17 9BA  
Telephone 01482 887700 •  
[www.eastriding.gov.uk](http://www.eastriding.gov.uk)

East Riding of Yorkshire Council  
County Hall Beverley  
East Riding of Yorkshire HU17 9BA  
Telephone 01482 887700 •  
[www.eastriding.gov.uk](http://www.eastriding.gov.uk)



- All winter vehicles are fitted with advanced tracking
- Many have auto salting systems



# LSG – Underpinning Service Transformation

- What next?
- Hardware & software developments
- Enhanced back office integration
- Ensure data is contemporary
- Embrace national and local initiatives - TER and mobile working
- Digital by default - reduce customer transactional costs
- Automated customer engagement and feedback
- Continue to innovate / share Best Practice
- Expect the unexpected!



# LSG – Underpinning Service transformation

Thank you for listening.  
Are there any questions?

David Richards

david.j.richards@eastriding.gov.uk



**EAST RIDING**  
OF YORKSHIRE COUNCIL

East Riding of Yorkshire Council  
County Hall Beverley  
East Riding of Yorkshire HU17 9BA  
Telephone 01482 887700 •  
[www.eastriding.gov.uk](http://www.eastriding.gov.uk)